



**BOARD OF TRUSTEES MEETING MINUTES
February 2, 2022**

Minutes of a public meeting of the board of trustees of the Washington County Water Conservancy District, held on Wednesday, February 2, 2022, at 533 East Waterworks Drive, St. George, Utah with a work meeting beginning at 4 pm and a regular meeting at 6 pm. Those board members present for the meeting were: Chair Ed Bowler, Kevin Tervort, Michele Randall, Chris Hart, Adam Bower, Kress Staheli and Victor Iverson joined by telephone. Also present were General Manager Zach Renstrom, Associate General Managers Corey Cram and Brie Thompson. Jodi Richins, attorney; and Roberta McMullin; Secretary/Treasurer were also present. Other guests at the meeting are included in the sign in sheet.

Chair Ed Bowler welcomed everyone to the meeting.

4:00 PM Work Meeting

Discussion of capital projects, funding and Capital Facilities Plan. The first item on the work meeting agenda was a discussion led by General Manager Zach Renstrom regarding capital projects. He said it is time to look at the Regional Water Capital Facilities Plan and they are starting to do that and work on a draft for a new Impact Fee and Facilities Plan. He said he would like to discuss some of the different options and challenges with the board.

He reviewed some of the projects from the last Capital Facilities Plan (CFP). There was discussion of the price estimate on the Ash Creek project and the increase in price. It may be up to 24 million dollars more than previously planned. Corey added this is a project we can't afford to wait on. There was discussion and the board members agreed that costs will keep going up and we just have to move forward.

There was general discussion and review of other proposed projects along with costs, supply chain issues, and the importance and need for these water projects.

Zach said the district has done a good job over the years of putting money in the bank for capital funds reserves.

Impact Fee and Facilities Plan (IFFP) – Zach told the board in the IFFP they looked at Equivalent Residential Connection (ERC) cost for a 10,000 sq. ft. lot and came up with a cost of about \$17,000 per ERC. He said in the new IFFP they would like to have true tiers and segregate different uses so they are going to ask Bowen Collins to analyze that and look at each category from residential homes, to townhomes, mobile homes, RV parks, etc. and come back with a number or cost for each one. There may be 15 or more different categories but then the developers can see how much it is and our staff doesn't have to calculate each one. Mayor Hart said he likes that idea and has wanted that to happen. The other board members also agreed with this. Zach said we are now at about \$12,500 per ERC and the IFFP says we should be at about \$17,000.

We are planning to spend \$82 million dollars this year on capital projects and a portion of that will come from impact fees, property taxes and water user rates. The State has some funding, and they are stressing water reuse and secondary metering the latter of which is harder in this area than up north. He said the district is working with our local legislators on recognizing that because we need the funds just as much, but we are unique and need more flexibility for secondary water metering in this area. The district is presently looking at water reuse in Graveyard Wash (\$10 million) and the Toquerville area also. Zach said the district applies for a lot of water smart grants and they will continue to work on those.

Water Conservation Outreach - Karry Rathje reported to the board on outreach efforts on water conservation. Some of the points covered in her report were:

- Washington Co. used 400 million gallons less water in 2021 compared to 2020 despite a 5% increase in population.
- Updated 2021 water conservation plan; new programs and rebates include turf rebates (pending legislation, funding available in July)
- Working on water efficiency ordinances
- Flip Blitz 2022 – a landscape conversion project. State will identify projects from north to south and we will do an online campaign and ask people to submit pictures of landscape. Cities, districts and counties will participate with projects, volunteers and funding.
- Monthly Outreach Calendar identifying primary and secondary messages for every month. Includes ads, events, media stories e-newsletters,

presentations, social media posts, etc. Identifies and specifies collaboration opportunities.

- Banners and rack cards arriving this month with information on how many times a week and how long to water. Will be displayed at all libraries as well as county and city offices.
- District appreciates the cities and their help and support.

Managers' report – Zach gave a brief report and said that we are now at about 125% for snowpack. It has come down but is still above average. January was a dismal month for precipitation. Last month it was at about 200% so it has dropped. He also showed a graph of the Snotel sites. He also showed the current reservoir levels.

The work meeting was adjourned upon motion and a break was taken before the start of the 6:00 PM board meeting.

6:00 PM Board Meeting

Those board members present for the meeting were: Chair Ed Bowler, Kevin Tervort, Michele Randall, Chris Hart, Adam Bower, Kress Staheli and Victor Iverson joined by telephone. Also present were General Manager Zach Renstrom, Associate General Managers Corey Cram and Brie Thompson. Jodi Richins, attorney; and Roberta McMullin; Secretary/Treasurer were also present. Other guests at the meeting are included in the sign in sheet.

The first item on agenda was **consideration of approval of two right-of-way easements on water district property for Balance of Nature.** Zach pointed out the Board has a handout with the maps and descriptions of the proposed easements. The district owns two sections of property in the Hurricane Bench Lake area and the district has retained it because it has excellent clay material on it for building dams. This clay was used on the Sand Hollow Reservoir project. The clay is stable clay and we want to keep it for future use on projects and then someday after all our dam building projects we won't need this property and will probably deed it to Hurricane City. The board, at a previous meeting, has already approved a request for a water line around this property. This request from Balance of Nature and Hurricane City is for a right of way so that they can build a road. Engineer Karl Rasmussen explained their need for the easements. Zach added that it is a master plan road for Hurricane City. The district would grant a right-of-way and Balance of Nature would be paying for the improvements. Corey mentioned with

the Toquer Reservoir project they plan on using the clay pit and eventually when the Warner Valley project is built, they would need a large volume of clay material and we would probably go even deeper than previous excavations. There was discussion and Karl Rasmussen answered some questions from the Board. Karl Rasmussen said they would also be putting in sewer and they could stockpile the extra material from that on to the district's property. Mayor Hart commented if they provide this extra material to the district in the agreement, he doesn't see a problem with this. Zach said we don't have an agreement yet, but if the board approves the rights-of-way, he will work with them on an agreement.

Kevin Tervort made a motion to approve the rights-of-way to Balance of Nature. Chris Hart seconded the motion and voting was as follows:

| | |
|------------------------|------------|
| <i>Ed Bowler</i> | <i>Yes</i> |
| <i>Kevin Tervort</i> | <i>Yes</i> |
| <i>Chris Hart</i> | <i>Yes</i> |
| <i>Adam Bowler</i> | <i>Yes</i> |
| <i>Michele Randall</i> | <i>Yes</i> |
| <i>Victor Iverson</i> | <i>Yes</i> |
| <i>Kress Staheli</i> | <i>Yes</i> |

Approval of bids for the Cottam Well No. 3 Drilling and Well Development

Project – Zach told the board the two existing wells are running full time to keep up with demand and this third well provides backup. It was put out for bid and they received two bids, one from Grimshaw Drilling and one from Gardner Brothers Drilling. The bids were higher than they were two or three years ago but were very close to each other. Gardner Brothers was the low bid at \$875,222.75 and Grimshaw Drilling came in at \$882,144 so the staff recommends awarding the bid to Gardner Brothers Drilling.

Mayor Randall moved to approve and award bid to Gardner Brothers Drilling in the amount of \$875,222.75 for the Cottam Well No. 3 Drilling and Well Development Project. Mayor Hart seconded the motion and voting was as follows:

| | |
|------------------------|------------|
| <i>Ed Bowler</i> | <i>Yes</i> |
| <i>Kevin Tervort</i> | <i>Yes</i> |
| <i>Chris Hart</i> | <i>Yes</i> |
| <i>Adam Bowler</i> | <i>Yes</i> |
| <i>Michele Randall</i> | <i>Yes</i> |

Victor Iverson *Yes*
Kress Staheli *Yes*

Next on the agenda was *consideration of approval of bids for the Ash Creek Tributaries Pipeline Project*. Corey said this is a portion of the Ash Creek Project, and it is to collect water out of leaky Ash Creek Reservoir to pipe it to the new Toquer Reservoir and collect water from tributaries coming from Pine Valley. This is the portion of the project that has been broken out to collect water out of South Ashcreek and Leap Creek and provide pressurized irrigation to Pintura and additional water that will flow down to Toquer Reservoir. The engineers estimate four years ago was five and a half million dollars. We ended up with three bids, Condie Construction, WW Clyde, and Interstate Rock. The low bidder was WW Clyde at \$7,121,000. After discussion, the following motion was made:

Chris Hart moved to approve the bid to WW Clyde for \$7,121,000 for the Ash Creek Tributary Project. The motion was seconded by Kevin Tervort and voting was as follows:

Ed Bowler *Yes*
Kevin Tervort *Yes*
Chris Hart *Yes*
Adam Bowler *Yes*
Michele Randall *Yes*
Victor Iverson *Yes*
Kress Staheli *Yes*

Zach said the next item of discussion was requested to be put on the agenda by Commissioner Iverson.

Zach provided some background for the discussion. The water district was formed by the Fifth District Court in 1962 after local citizens had requested the formation of a water district. For many years the appointments to the board were made by the court after people submitted applications. Subsequently the law changed on how boards were appointed. Our board is appointed by the county commission. We have always had seven board members and, if we want to expand our board, it has to be by two-thirds vote of this board. There has been a request recently about adding additional board members. The water district policies are set for a seven-member board. Zach said he would like some direction from the board on this.

Commissioner Victor Iverson said for many years the board was not necessarily made up of elected officials. He said it has become very important to have political subdivisions engaged and at the table. The suggestion they have been discussing is adding four more board members if the board approves this. They would appoint four alternate non-voting board members which would include mayors of Hurricane, Toquerville, La Verkin & Santa Clara. They wouldn't vote unless needed for a quorum. He said they did something similar to this with the planning commission years ago and it has worked well. They would request the board to discuss this.

Chair Ed Bowler called for discussion.

Chris Hart said he opposes this idea for a couple of reasons. First, it is a dangerous precedent to consider altering the board on the basis of an election and secondly, all the mayors participate on an advisory board so adding four additional mayors who would be non-voting just to participate in discussion doesn't seem necessary. He said he had been a mayor for six or seven years before he was appointed to the board.

Michele Randall said she doesn't think expanding the board is a good idea especially if they are not voting members. She thinks large boards are difficult because it is hard to get things done and get people on the same page. Most boards don't have alternate members if you don't have a quorum.

Kress Staheli said he is not sure he should make a recommendation since he is new to the board but that he views himself as representing the whole county in his capacity as board member. He added that the regional water supply administrative committee that the mayors are part of is very informative when talking regionally and talking about effective water policy.

Victor Iverson said this is a good board and the commission's goal is to be helpful to the water district board. If another venue can engage these municipalities, they are fine with that too. Some excellent points have been made and if the board wants to table this for now, they understand.

Commissioner Adam Snow was present and added that they are just trying to make sure they have an 'all hands-on deck' approach and to make sure they have a unanimous had unified front on all water conservation and other water issues and have a buy-in from all so that every community has a voice.

Michelle Randall said that instead of bringing four people to the board that don't have votes why not just continue to have the mayors' meetings like last week where all mayors are present. Chris Hart added that he is not opposed to the idea of representation from all participating cities if there is a need for a change, but redefining the board shouldn't be a knee jerk reaction to the current situation or recent elections.

Ed Bowler said based on this discussion, it appears the board is not ready for a vote tonight and suggests we table this discussion.

Ed Bowler acknowledged Mayor Nanette Billings, who added that when you are on this board you represent Washington County but who is going to come back and report to the Hurricane City Council as she isn't on the board. People that are elected are accountable to the citizens they represent. She didn't know these proposed additions to the board would be non-voting members. She said she is happy to continue to come to these meetings, but when you don't have a seat at the table or a vote, it isn't the same.

Kevin Tervort said when he was appointed to the board he never looked at it as him representing Hurricane City or as an assignment in his capacity as city council member. He was appointed by the county commission and represents the county.

Chris Hart asked if the board makeup is all mayors does it become territorial. He thinks there needs to be a lot more thought and clarification. You don't alter something like this board casually. There are still questions for him about this. He said it doesn't mean he would vote against some alteration if the explanation for it occurring is satisfactory to him but at this time it isn't.

Chris Hart moved to table this agenda item on adding alternative board members. Michele Randall seconded the motion and voting was as follows:

- Ed Bowler* *Yes*
- Kevin Tervort* *Yes*
- Chris Hart* *Yes*
- Adam Bowler* *Yes*
- Michele Randall* *Yes*
- Victor Iverson* *Yes*
- Kress Staheli* *Yes*

The minutes of the January 5, 2022 Board of Trustees' Meeting were considered for approval.

Chris Hart moved to approve the minutes of January 5, 2022, Board of Trustees' Meeting as presented. Kevin Tervort seconded the motion. The voting was as follows:

| | |
|------------------------|------------|
| <i>Ed Bowler</i> | <i>Yes</i> |
| <i>Kevin Tervort</i> | <i>Yes</i> |
| <i>Chris Hart</i> | <i>Yes</i> |
| <i>Adam Bowler</i> | <i>Yes</i> |
| <i>Michele Randall</i> | <i>Yes</i> |
| <i>Victor Iverson</i> | <i>Yes</i> |
| <i>Kress Staheli</i> | <i>Yes</i> |

There was no further business to come before the board and the meeting was adjourned.

Secretary

BALANCE OF NATURE LEGAL DESCRIPTIONS

NORTHWEST RIGHT-OF-WAY ACCESS EASEMENT PARCEL 1 DESCRIPTION:

BEGINNING AT THE SOUTHWEST CORNER OF THE NORTHWEST QUARTER OF THE SOUTHEAST QUARTER OF SECTION 17, TOWNSHIP 42 SOUTH, RANGE 13 WEST, OF THE SALT LAKE BASE AND MERIDIAN;

THENCE S88°57'47"E ALONG THE SIXTEENTH SECTION LINE, 55.00 FEET;

THENCE S01°04'40"W 19.43 FEET;

THENCE SOUTHERLY ALONG THE ARC OF A 555.00 FOOT RADIUS CURVE TO THE RIGHT A DISTANCE OF 147.27 FEET, THROUGH A CENTRAL ANGLE OF 15°12'13" (LONG CHORD BEARS: S08°40'47"W 146.84 FEET); THENCE S16°16'53"W 135.65 FEET TO THE QUARTER SECTION LINE;

THENCE N01°04'40"E ALONG SAID LINE, 295.84 FEET TO THE POINT OF BEGINNING.

AREA CONTAINS 10,465 SQUARE FEET OR 0.240 ACRES.

EAST RIGHT-OF-WAY ACCESS EASEMENT PARCEL 2 DESCRIPTION:

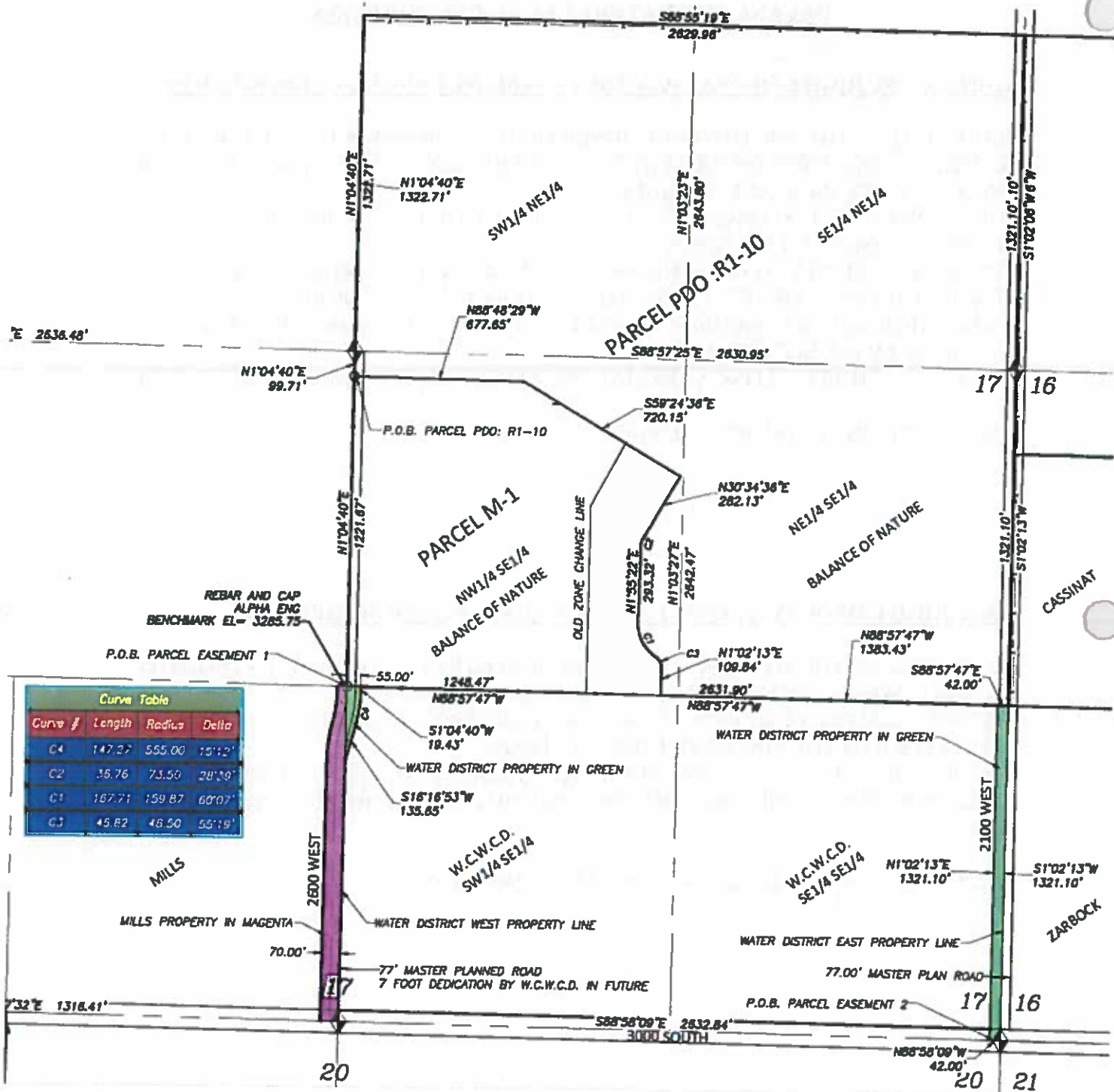
BEGINNING AT THE SOUTHEAST CORNER OF SECTION 17, TOWNSHIP 42 SOUTH, RANGE 13 WEST, OF THE SALT LAKE BASE AND MERIDIAN;

THENCE N88°58'09"W ALONG THE SECTION LINE, 42.00 FEET; THENCE N01°02'13"E 1321.10 FEET TO THE SIXTEENTH SECTION LINE;

THENCE S88°57'47"E ALONG SAID LINE, 42.00 FEET TO THE EAST SECTION LINE;

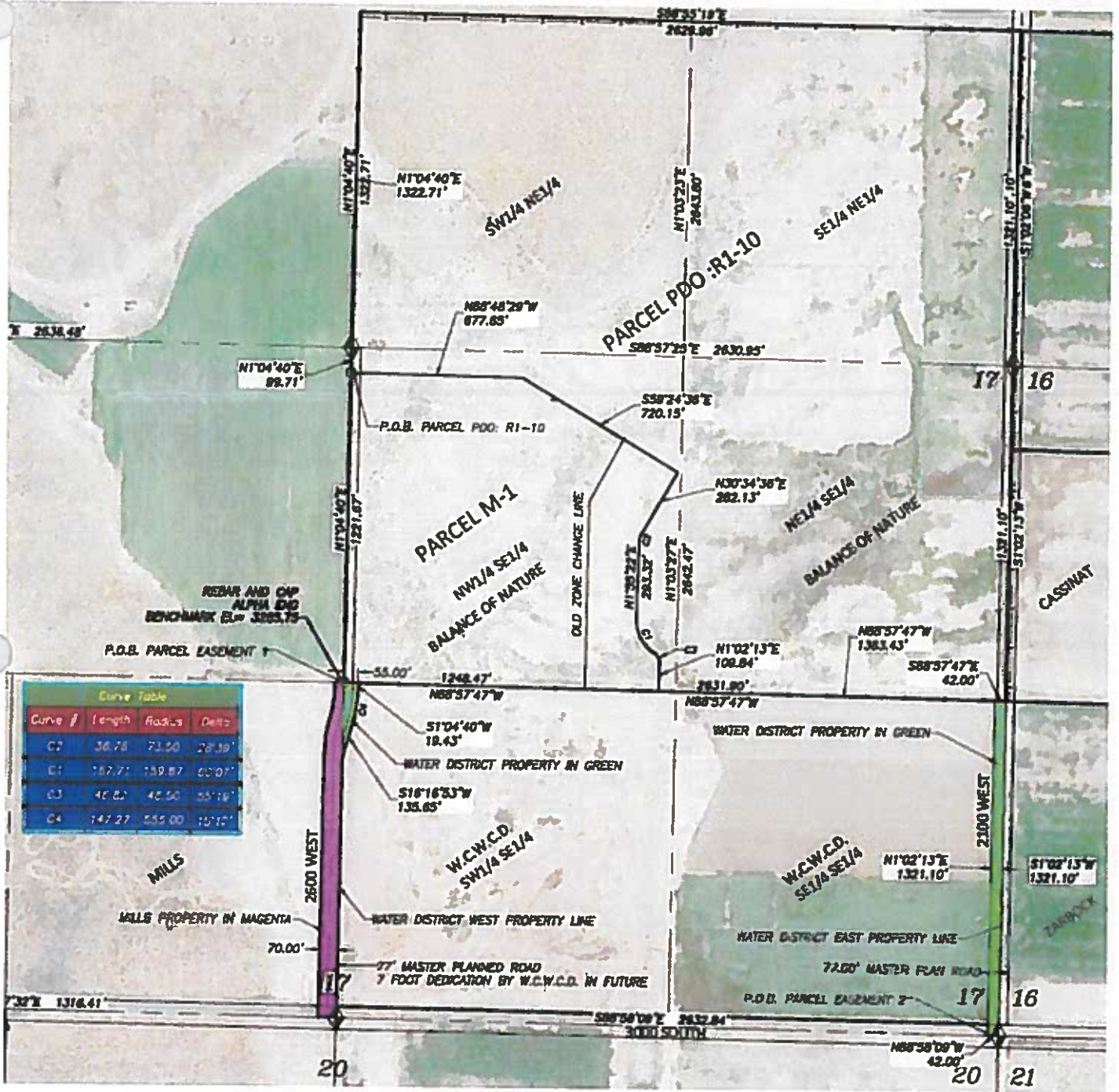
THENCE S01°02'13"W ALONG SAID LINE, 1321.10 FEET TO THE POINT OF BEGINNING.

AREA CONTAINS 55,486 SQUARE FEET OR 1.274 ACRES.



| Curve Table | | | |
|-------------|--------|--------|--------|
| Curve # | Length | Radius | Delta |
| C4 | 147.27 | 555.00 | 15°12' |
| C2 | 36.76 | 73.50 | 28°20' |
| C1 | 187.71 | 159.87 | 60°07' |
| C3 | 45.82 | 46.50 | 55°19' |

MAP OF EASEMENTS



| Curve | Length | Radius | Delta |
|-------|--------|--------|--------|
| C2 | 36.78 | 71.50 | 28.58' |
| C1 | 187.71 | 189.87 | 60°07' |
| C3 | 40.82 | 40.50 | 85°16' |
| C4 | 147.27 | 555.00 | 10°12' |

MAP OF EASEMENTS 2





43 South 100 East, Suite 100 T 435.628.6500
St George, Utah 84770 F 435.628.6553

alphaengineering.com

February 1, 2022

Mr. Trinity Stout
Washington County Water Conservancy District
533 East Waterworks Drive
St. George, UT 84770

Re: Cottam Well No. 3 Drilling and Well Development Project

Dear Trinity:

As you are aware, two bids were received for the above referenced project. Please find attached the bid tabulation for the project. Gardner Brothers Drilling was the lowest bid with a price of \$875,222.73. Grimshaw Drilling was the next with a bid of \$882,144.00.

We reviewed the unit costs of the low bid in comparison to other bids received and there are not any major discrepancies. The unit costs and total bid amount are approximately 25% higher than the previously completed Well No. 12 at Sand Hollow. We have seen a substantial increase in materials pricing and construction costs recently. However, we recommend award of the bid to Gardner Brothers Drilling if the project is within the budget you have planned for the project.

Sincerely,

Brent E. Gardner, P.E.
Alpha Engineering Company

Attachment: Bid Tabulation

ALPHA

ALPHA

ALPHA





ALPHA
ENGINEERING

43 South 100 East, Suite 100 T 435.628.6500
St George, Utah 84770 F 435.628.6553

alphaengineering.com

February 1, 2022

Mr. Trinity Stout
Washington County Water Conservancy District
533 East Waterworks Drive
St. George, UT 84770

Re: Cottam Well No. 3 Drilling and Well Development Project

Dear Trinity:

As you are aware, two bids were received for the above referenced project. Please find attached the bid tabulation for the project. Gardner Brothers Drilling was the lowest bid with a price of \$875,222.73. Grimshaw Drilling was the next with a bid of \$882,144.00.

We reviewed the unit costs of the low bid in comparison to other bids received and there are not any major discrepancies. The unit costs and total bid amount are approximately 25% higher than the previously completed Well No. 12 at Sand Hollow. We have seen a substantial increase in materials pricing and construction costs recently. However, we recommend award of the bid to Gardner Brothers Drilling if the project is within the budget you have planned for the project.

Sincerely,

Brent E. Gardner, P.E.
Alpha Engineering Company

Attachment: Bid Tabulation

WCWCD
Cottam Well No. 3 Drilling and Well Development Project
Bid Tabulation - February 1, 2022

BID SCHEDULE - COTTAM WELL NO. 3 DRILLING AND WELL DEVELOPMENT PROJECT

| Item | Description | Quantity | Units | Gardner Brothers Drilling | | Grimshaw Drilling | |
|---------------------------|---|----------|---------|---------------------------|---------------------|-------------------|---------------------|
| | | | | Unit Price | Total | Unit Price | Total |
| 1 | Mobilization | 1 | L.S. | \$14,000.00 | \$14,000.00 | \$35,000.00 | \$35,000.00 |
| 2 | Drilling Pad and Access Road Preparation | 1 | L.S. | \$35,000.00 | \$35,000.00 | \$24,500.00 | \$24,500.00 |
| 3 | Furnish and Install Untreated Base Course (6" Depth) | 25,420 | S.F. | \$2.15 | \$54,653.00 | \$1.25 | \$31,775.00 |
| 4 | Drill 30" Hole and Furnish and Install 26" Carrier Casing | 103 | Ln. Ft. | \$702.91 | \$72,399.73 | \$515.00 | \$53,045.00 |
| 5 | Grout (upper 100 ft of well) | 1 | L.S. | \$16,000.00 | \$16,000.00 | \$15,000.00 | \$15,000.00 |
| 6 | Drill 24" Inch Diameter Hole | 500 | Ln. Ft. | \$288.00 | \$144,000.00 | \$285.00 | \$142,500.00 |
| 7 | Alignment Deviation Survey | 1 | L.S. | \$6,500.00 | \$6,500.00 | \$12,500.00 | \$12,500.00 |
| 8 | Furnish and Install 16 Inch Diameter Steel Well Casing | 13 | Ln. Ft. | \$90.00 | \$1,170.00 | \$98.00 | \$1,274.00 |
| 9 | Furnish and Install 16 Inch Diameter SS Well Casing | 50 | Ln. Ft. | \$510.00 | \$25,500.00 | \$447.00 | \$22,350.00 |
| 10 | Furnish and Install 16 Inch Diameter SS Well Screen | 540 | Ln. Ft. | \$300.00 | \$162,000.00 | \$295.00 | \$159,300.00 |
| 11 | Furnish and Install 1-1/2" Sch 80 PVC Telemetry Tube | 600 | Ln. Ft. | \$20.00 | \$12,000.00 | \$12.50 | \$7,500.00 |
| 12 | Furnish and Install Gravel Pack | 80 | Tons | \$1,000.00 | \$80,000.00 | \$1,650.00 | \$132,000.00 |
| 13 | Casing Alignment | 1 | L.S. | \$4,500.00 | \$4,500.00 | \$3,500.00 | \$3,500.00 |
| 14 | Develop Well (Dual Surge Block) | 180 | Hours | \$400.00 | \$72,000.00 | \$375.00 | \$67,500.00 |
| 15 | Develop Well (Pump Surge) | 180 | Hours | \$400.00 | \$72,000.00 | \$425.00 | \$76,500.00 |
| 16 | Furnish, Install and Remove Test Pump Equipment (300 to 1500 gpm capacity pump) | 580 | Ln. Ft. | \$50.00 | \$29,000.00 | \$45.00 | \$26,100.00 |
| 17 | Test Pump (300 to 1500 gpm capacity pump) | 180 | Hours | \$400.00 | \$72,000.00 | \$385.00 | \$69,300.00 |
| 18 | Disinfect Well | 1 | L.S. | \$2,500.00 | \$2,500.00 | \$2,500.00 | \$2,500.00 |
| Total Bid Schedule | | | | | \$875,222.73 | | \$882,144.00 |



WCWCD
Cottam Well No. 3 Drilling and Well Development Project
Bid Tabulation - February 1, 2022

BID SCHEDULE - COTTAM WELL NO. 3 DRILLING AND WELL DEVELOPMENT PROJECT

| Item | Description | Quantity | | Units | Gardner Brothers Drilling | | Grimshaw Drilling | |
|---------------------------|---|----------|--|---------|---------------------------|--------------|-------------------|--------------|
| | | | | | Unit Price | Total | Unit Price | Total |
| 1 | Mobilization | 1 | | L.S. | \$14,000.00 | \$14,000.00 | \$35,000.00 | \$35,000.00 |
| 2 | Drilling Pad and Access Road Preparation | 1 | | L.S. | \$35,000.00 | \$35,000.00 | \$24,500.00 | \$24,500.00 |
| 3 | Furnish and Install Untreated Base Course (6" Depth) | 25,420 | | S.F. | \$2.15 | \$54,653.00 | \$1.25 | \$31,775.00 |
| 4 | Drill 30" Hole and Furnish and Install 26" Carrier Casing | 103 | | Ln. Ft. | \$702.91 | \$72,399.73 | \$515.00 | \$53,045.00 |
| 5 | Grout (upper 100 ft of well) | 1 | | L.S. | \$16,000.00 | \$16,000.00 | \$15,000.00 | \$15,000.00 |
| 6 | Drill 24" Inch Diameter Hole | 500 | | Ln. Ft. | \$288.00 | \$144,000.00 | \$285.00 | \$142,500.00 |
| 7 | Alignment Deviation Survey | 1 | | L.S. | \$6,500.00 | \$6,500.00 | \$12,500.00 | \$12,500.00 |
| 8 | Furnish and Install 16 Inch Diameter Steel Well Casing | 13 | | Ln. Ft. | \$90.00 | \$1,170.00 | \$98.00 | \$1,274.00 |
| 9 | Furnish and Install 16 Inch Diameter SS Well Casing | 50 | | Ln. Ft. | \$510.00 | \$25,500.00 | \$447.00 | \$22,350.00 |
| 10 | Furnish and Install 16 Inch Diameter SS Well Screen | 540 | | Ln. Ft. | \$300.00 | \$162,000.00 | \$295.00 | \$159,300.00 |
| 11 | Furnish and Install 1-1/2" Sch 80 PVC Telemetry Tube | 600 | | Ln. Ft. | \$20.00 | \$12,000.00 | \$12.50 | \$7,500.00 |
| 12 | Furnish and Install Gravel Pack | 80 | | Tons | \$1,000.00 | \$80,000.00 | \$1,650.00 | \$132,000.00 |
| 13 | Casing Alignment | 1 | | L.S. | \$4,500.00 | \$4,500.00 | \$3,500.00 | \$3,500.00 |
| 14 | Develop Well (Dual Surge Block) | 180 | | Hours | \$400.00 | \$72,000.00 | \$375.00 | \$67,500.00 |
| 15 | Develop Well (Pump Surge) | 180 | | Hours | \$400.00 | \$72,000.00 | \$425.00 | \$76,500.00 |
| 16 | Furnish, Install and Remove Test Pump Equipment (300 to 1500 gpm capacity pump) | 580 | | Ln. Ft. | \$50.00 | \$29,000.00 | \$45.00 | \$26,100.00 |
| 17 | Test Pump (300 to 1500 gpm capacity pump) | 180 | | Hours | \$400.00 | \$72,000.00 | \$385.00 | \$69,300.00 |
| 18 | Disinfect Well | 1 | | L.S. | \$2,500.00 | \$2,500.00 | \$2,500.00 | \$2,500.00 |
| Total Bid Schedule | | | | | | \$875,222.73 | | \$882,144.00 |



43 South 100 East, Suite 100 T 435.628.6500
St George, Utah 84770 F 435.628.6553

alphaengineering.com

February 1, 2022

Mr. Trinity Stout
Washington County Water Conservancy District
533 East Waterworks Drive
St. George, UT 84770

Re: Ash Creek Tributaries Pipeline Project

Dear Trinity:

As you are aware, three bids were received for the above referenced project. Please find attached the bid tabulation for the project. WW Clyde & Co. was the lowest bid with a price of \$7,121,000.00. Condie Construction was the next with a bid of \$7,987,611.00 and Interstate Rock was the final bid with \$10,191,808.00.

We reviewed the unit costs of the low bid in comparison to other bids received and there are not any major discrepancies. We have seen a substantial increase in materials pricing and construction costs recently. However, we recommend award of the bid to WW Clyde if the project is within the budget you have planned for the project.

Sincerely,

Todd Gardner, P.E.
Alpha Engineering Company

ALPHA

ALPHA



WCWCD
Ash Creek Tributaries Pipeline Project
Bid Tabulation - February 1, 2022

BID SCHEDULE - Ash Creek Tributaries Pipeline Project

| Item | Description | Quantity | Units | WW Clyde | | Condit Construction | | Interstate Rock | |
|------|--|----------|----------|--------------|--------------|---------------------|----------------|-----------------|----------------|
| | | | | Unit Price | Total | Unit Price | Total | Unit Price | Total |
| 1 | Mobilization | 1 | Lump Sum | \$625,725.00 | \$625,725.00 | \$1,116,000.00 | \$1,116,000.00 | \$312,000.00 | \$312,000.00 |
| 2 | Clearing and Grubing | 1 | Lump Sum | \$150,000.00 | \$150,000.00 | \$57,660.00 | \$57,660.00 | \$24,455.00 | \$24,455.00 |
| 3 | Earthwork (14" Wide Road) | 19,000 | Ln. Ft. | \$20.00 | \$380,000.00 | \$27.65 | \$525,350.00 | \$18.80 | \$357,200.00 |
| 4 | Furnish and Install 6" Depth Road Base Gravel | 265,000 | Sq. Ft. | \$0.70 | \$185,500.00 | \$0.85 | \$225,250.00 | \$1.35 | \$357,750.00 |
| 5 | Furnish and Install HMA Road Patch | 50,000 | Sq. Ft. | \$4.00 | \$200,000.00 | \$3.40 | \$170,000.00 | \$9.25 | \$462,500.00 |
| 6 | Furnish and Install Riprap Stream Channel Protection | 7,200 | Cu. Yd. | \$20.00 | \$144,000.00 | \$26.00 | \$187,200.00 | \$13.70 | \$98,640.00 |
| 7 | Furnish and Install Grouted Riprap Stream Channel Protection | 1,800 | Sq. Ft. | \$14.00 | \$25,200.00 | \$30.00 | \$54,000.00 | \$176.00 | \$316,800.00 |
| 8 | Furnish and Install 36" DR17 HDPE Pipe | 1,850 | Ln. Ft. | \$262.00 | \$484,700.00 | \$327.00 | \$604,950.00 | \$357.50 | \$661,375.00 |
| 9 | Furnish and Install 30" DR17 HDPE Pipe | 2,250 | Ln. Ft. | \$223.00 | \$501,750.00 | \$273.00 | \$614,250.00 | \$308.50 | \$694,125.00 |
| 10 | Furnish and Install 18" DR17 HDPE Pipe | 8,600 | Ln. Ft. | \$110.00 | \$946,000.00 | \$116.75 | \$1,004,050.00 | \$246.50 | \$2,119,900.00 |
| 11 | Furnish and Install 16" DR17 HDPE Pipe | 650 | Ln. Ft. | \$110.00 | \$71,500.00 | \$137.70 | \$89,505.00 | \$109.00 | \$70,850.00 |
| 12 | Furnish and Install 12" DR17 HDPE Pipe | 12,700 | Ln. Ft. | \$78.00 | \$990,600.00 | \$94.40 | \$1,198,880.00 | \$187.50 | \$2,381,250.00 |
| 13 | Furnish and Install 10" DR17 HDPE Pipe | 450 | Ln. Ft. | \$95.00 | \$42,750.00 | \$134.40 | \$60,480.00 | \$49.80 | \$22,410.00 |
| 14 | Furnish and Install 10" PVC Pipe | 225 | Ln. Ft. | \$95.00 | \$21,375.00 | \$144.00 | \$32,400.00 | \$156.00 | \$35,100.00 |
| 15 | Furnish and Install 8" PVC Pipe | 1,850 | Ln. Ft. | \$86.00 | \$159,100.00 | \$70.00 | \$129,500.00 | \$129.00 | \$238,650.00 |
| 16 | Furnish and Install 6" PVC Pipe | 1,850 | Ln. Ft. | \$63.00 | \$116,550.00 | \$61.00 | \$112,850.00 | \$116.00 | \$214,600.00 |
| 17 | Furnish and Install 36" HDPE Flange Adapter with Backup Ring | 2 | Each | \$4,500.00 | \$9,000.00 | \$4,583.00 | \$9,166.00 | \$4,135.00 | \$8,270.00 |
| 18 | Furnish and Install 30" HDPE Flange Adapter with Backup Ring | 2 | Each | \$6,200.00 | \$12,400.00 | \$3,200.00 | \$6,400.00 | \$2,782.00 | \$5,564.00 |

WCWCD
Ash Creek Tributaries Pipeline Project
Bid Tabulation - February 1, 2022

| | | | | | | | | | |
|----|--|---|------|-------------|-------------|-------------|-------------|-------------|-------------|
| 19 | Furnish and Install 18" HDPE Flange Adapter with Backup Ring | 3 | Each | \$1,600.00 | \$4,800.00 | \$1,330.00 | \$3,990.00 | \$1,363.00 | \$4,089.00 |
| 20 | Furnish and Install 16" HDPE Flange Adapter with Backup Ring | 7 | Each | \$1,500.00 | \$10,500.00 | \$1,780.00 | \$12,460.00 | \$1,147.00 | \$8,029.00 |
| 21 | Furnish and Install 12" HDPE Flange Adapter with Backup Ring | 5 | Each | \$900.00 | \$4,500.00 | \$500.00 | \$2,500.00 | \$831.00 | \$4,155.00 |
| 22 | Furnish and Install 10" HDPE Flange Adapter with Backup Ring | 1 | Each | \$900.00 | \$900.00 | \$860.00 | \$860.00 | \$775.50 | \$775.50 |
| 23 | Furnish and Install 18" HDPE MJ Adapter Kit | 3 | Each | \$1,800.00 | \$5,400.00 | \$1,500.00 | \$4,500.00 | \$1,530.00 | \$4,590.00 |
| 24 | Furnish and Install 16" HDPE MJ Adapter Kit | 1 | Each | \$1,700.00 | \$1,700.00 | \$3,000.00 | \$3,000.00 | \$1,364.00 | \$1,364.00 |
| 25 | Furnish and Install 14" HDPE MJ Adapter Kit | 1 | Each | \$1,600.00 | \$1,600.00 | \$2,880.00 | \$2,880.00 | \$1,246.00 | \$1,246.00 |
| 26 | Furnish and Install 12" HDPE MJ Adapter Kit | 6 | Each | \$1,000.00 | \$6,000.00 | \$600.00 | \$3,600.00 | \$945.50 | \$5,673.00 |
| 27 | Furnish and Install 10" HDPE MJ Adapter Kit | 1 | Each | \$1,000.00 | \$1,000.00 | \$1,000.00 | \$1,000.00 | \$904.50 | \$904.50 |
| 28 | Furnish and Install 36" x 24" Flange Ductile Iron Tee | 1 | Each | \$23,000.00 | \$23,000.00 | \$14,700.00 | \$14,700.00 | \$14,610.00 | \$14,610.00 |
| 29 | Furnish and Install 36" x 30" Flange Ductile Iron Reducer | 1 | Each | \$16,000.00 | \$16,000.00 | \$10,500.00 | \$10,500.00 | \$9,581.00 | \$9,581.00 |
| 30 | Furnish and Install 36" Ductile Iron Blind Flange | 1 | Each | \$9,800.00 | \$9,800.00 | \$6,480.00 | \$6,480.00 | \$6,434.00 | \$6,434.00 |
| 31 | Furnish and Install 30" Ductile Iron Blind Flange | 1 | Each | \$5,500.00 | \$5,500.00 | \$4,070.00 | \$4,070.00 | \$4,074.00 | \$4,074.00 |
| 32 | Furnish and Install 24" x 16" Flange Ductile Iron Reducer | 1 | Each | \$5,100.00 | \$5,100.00 | \$3,200.00 | \$3,200.00 | \$3,625.00 | \$3,625.00 |
| 33 | Furnish and Install 18" x 18" Flange Ductile Iron Tee | 1 | Each | \$5,800.00 | \$5,800.00 | \$3,860.00 | \$3,860.00 | \$4,150.00 | \$4,150.00 |
| 34 | Furnish and Install 18" x 16" MJ Ductile Iron Reducer | 1 | Each | \$2,500.00 | \$2,500.00 | \$1,630.00 | \$1,630.00 | \$2,255.00 | \$2,255.00 |
| 35 | Furnish and Install 18" x 12" Flange Ductile Iron Reducer | 1 | Each | \$2,800.00 | \$2,800.00 | \$2,050.00 | \$2,050.00 | \$2,661.00 | \$2,661.00 |
| 36 | Furnish and Install 18" MJ x 6" Flange Ductile Iron Tee | 1 | Each | \$3,600.00 | \$3,600.00 | \$2,100.00 | \$2,100.00 | \$2,228.00 | \$2,228.00 |
| 37 | Furnish and Install 16" Flange Ductile Iron 90 Degree Bend | 2 | Each | \$3,200.00 | \$6,400.00 | \$2,220.00 | \$4,440.00 | \$2,327.00 | \$4,654.00 |
| 38 | Furnish and Install 14" x 12" MJ Ductile Iron Reducer | 1 | Each | \$1,700.00 | \$1,700.00 | \$940.00 | \$940.00 | \$1,357.00 | \$1,357.00 |

WCWCD
Ash Creek Tributaries Pipeline Project
Bid Tabulation - February 1, 2022

| | | | | | | | | | |
|----|---|----|------|-------------|-------------|------------|--------------|------------|--------------|
| 39 | Furnish and Install 12" x 10" MJ Ductile Iron Reducer | 1 | Each | \$1,000.00 | \$1,000.00 | \$730.00 | \$730.00 | \$1,441.00 | \$1,441.00 |
| 40 | Furnish and Install 12" MJ x 6" Flange Ductile Iron Tee | 1 | Each | \$2,000.00 | \$2,000.00 | \$760.00 | \$760.00 | \$1,610.00 | \$1,610.00 |
| 41 | Furnish and Install 12" Flange Ductile Iron 90 Degree Bend | 1 | Each | \$1,800.00 | \$1,800.00 | \$1,100.00 | \$1,100.00 | \$1,936.00 | \$1,936.00 |
| 42 | Furnish and Install 12" x 4" Flange Ductile Iron Tee | 1 | Each | \$2,600.00 | \$2,600.00 | \$1,280.00 | \$1,280.00 | \$2,142.00 | \$2,142.00 |
| 43 | Furnish and Install 10" x 10" Flange Ductile Iron Tee | 1 | Each | \$2,300.00 | \$2,300.00 | \$1,690.00 | \$1,690.00 | \$2,233.00 | \$2,233.00 |
| 44 | Furnish and Install 10" x 8" Flange Ductile Iron Reducer | 1 | Each | \$1,200.00 | \$1,200.00 | \$770.00 | \$770.00 | \$1,615.00 | \$1,615.00 |
| 45 | Furnish and Install 10" x 6" Flange Ductile Iron Reducer | 1 | Each | \$1,000.00 | \$1,000.00 | \$670.00 | \$670.00 | \$1,543.00 | \$1,543.00 |
| 46 | Furnish and Install 10" Flange Ductile Iron 90 Degree Bend | 1 | Each | \$1,500.00 | \$1,500.00 | \$1,400.00 | \$1,400.00 | \$2,245.00 | \$2,245.00 |
| 47 | Furnish and Install 10" MJ Ductile Iron 90 Degree Bend | 1 | Each | \$1,200.00 | \$1,200.00 | \$870.00 | \$870.00 | \$1,711.00 | \$1,711.00 |
| 48 | Furnish and Install 10" Flange x MJ Ductile Iron Adapter | 3 | Each | \$1,100.00 | \$3,300.00 | \$670.00 | \$2,010.00 | \$1,523.00 | \$4,569.00 |
| 49 | Furnish and Install 8" MJ Ductile Iron Cap and Retaining Gland | 1 | Each | \$700.00 | \$700.00 | \$370.00 | \$370.00 | \$1,220.00 | \$1,220.00 |
| 50 | Furnish and Install 6" MJ Ductile Iron Cap and Retaining Gland | 1 | Each | \$600.00 | \$600.00 | \$300.00 | \$300.00 | \$1,148.00 | \$1,148.00 |
| 51 | Furnish and Install 18" Flange Butterfly Valve | 1 | Each | \$10,000.00 | \$10,000.00 | \$7,200.00 | \$7,200.00 | \$6,863.00 | \$6,863.00 |
| 52 | Furnish and Install 12" Flange Butterfly Valve | 1 | Each | \$7,000.00 | \$7,000.00 | \$4,500.00 | \$4,500.00 | \$4,583.00 | \$4,583.00 |
| 53 | Furnish and Install 8" Flange x MJ Gate Valve and Retaining Gland | 1 | Each | \$4,500.00 | \$4,500.00 | \$2,550.00 | \$2,550.00 | \$2,671.00 | \$2,671.00 |
| 54 | Furnish and Install 6" Flange x MJ Gate Valve and Retaining Gland | 3 | Each | \$3,900.00 | \$11,700.00 | \$1,880.00 | \$5,640.00 | \$2,018.00 | \$6,054.00 |
| 55 | Furnish and Install 4" Air Vent Assembly | 14 | Each | \$5,800.00 | \$81,200.00 | \$8,840.00 | \$123,760.00 | \$7,872.00 | \$110,208.00 |
| 56 | Furnish and Install 1" Air/Vacuum Valve Assembly | 6 | Each | \$11,000.00 | \$66,000.00 | \$6,900.00 | \$41,400.00 | \$7,033.00 | \$42,198.00 |
| 57 | Furnish and Install Wildlife Guzzler Assembly | 2 | Each | \$7,900.00 | \$15,800.00 | \$7,800.00 | \$15,600.00 | \$3,938.00 | \$7,876.00 |
| 58 | Furnish and Install 2" Service Connection | 8 | Each | \$6,000.00 | \$48,000.00 | \$4,320.00 | \$34,560.00 | \$3,475.00 | \$27,800.00 |

WCWCD
Ash Creek Tributaries Pipeline Project
Bid Tabulation - February 1, 2022

| | | | | | | | | | |
|---------------------------|---|--------|----------|--------------|-----------------------|--------------|-----------------------|--------------|------------------------|
| 59 | Furnish and Install 1-1/2" Service Connection | 3 | Each | \$5,000.00 | \$15,000.00 | \$4,200.00 | \$12,600.00 | \$3,213.00 | \$9,639.00 |
| 60 | Construct South Ash Creek Diversion Works | 1 | Lump Sum | \$528,000.00 | \$528,000.00 | \$380,290.00 | \$380,290.00 | \$355,500.00 | \$355,500.00 |
| 61 | Construct Regulating Pond | 1 | Lump Sum | \$350,000.00 | \$350,000.00 | \$321,880.00 | \$321,880.00 | \$389,900.00 | \$389,900.00 |
| 62 | Construct Regulating Pond Inlet Structure | 1 | Lump Sum | \$30,000.00 | \$30,000.00 | \$16,420.00 | \$16,420.00 | \$28,625.00 | \$28,625.00 |
| 63 | Construct Regulating Pond Outlet Structure | 1 | Lump Sum | \$28,000.00 | \$28,000.00 | \$23,500.00 | \$23,500.00 | \$43,095.00 | \$43,095.00 |
| 64 | Construct Regulating Pond Overflow Structure | 1 | Lump Sum | \$28,000.00 | \$28,000.00 | \$23,500.00 | \$23,500.00 | \$44,260.00 | \$44,260.00 |
| 65 | Furnish and Install 6' Chain Link Security Fence | 1,250 | Ln. Ft. | \$43.00 | \$53,750.00 | \$42.40 | \$53,000.00 | \$43.00 | \$53,750.00 |
| 66 | Furnish and Install 12' Chain Link Security Gate | 1 | Each | \$1,300.00 | \$1,300.00 | \$1,250.00 | \$1,250.00 | \$1,275.00 | \$1,275.00 |
| 67 | Furnish and Install 4' Chain Link Security Gate | 1 | Each | \$600.00 | \$600.00 | \$600.00 | \$600.00 | \$3,492.00 | \$3,492.00 |
| 68 | Furnish and Install 16' Livestock Gate | 1 | Each | \$1,200.00 | \$1,200.00 | \$1,100.00 | \$1,100.00 | \$1,135.00 | \$1,135.00 |
| 69 | Construct Upper Leap Creek Meter Station | 1 | Lump Sum | \$25,000.00 | \$25,000.00 | \$25,500.00 | \$25,500.00 | \$29,725.00 | \$29,725.00 |
| 70 | Construct Lower Leap Creek/Pintura Irrigation Meter Station | 1 | Lump Sum | \$115,000.00 | \$115,000.00 | \$123,500.00 | \$123,500.00 | \$118,500.00 | \$118,500.00 |
| 71 | Construct Sunroc Meter Station | 1 | Lump Sum | \$27,000.00 | \$27,000.00 | \$22,500.00 | \$22,500.00 | \$29,375.00 | \$29,375.00 |
| 72 | Construct Ash Creek Pipeline Blowoff Assembly | 1 | Lump Sum | \$14,000.00 | \$14,000.00 | \$13,800.00 | \$13,800.00 | \$11,260.00 | \$11,260.00 |
| 73 | Furnish and Install 1-1/2" HDPE Fiber Conduit | 23,800 | Ln. Ft. | \$10.00 | \$238,000.00 | \$6.70 | \$159,460.00 | \$4.05 | \$96,390.00 |
| 74 | Furnish and Install FRP Tier 15 Communication Pull Box | 27 | Each | \$1,500.00 | \$40,500.00 | \$2,400.00 | \$64,800.00 | \$1,746.00 | \$47,142.00 |
| 75 | Furnish and Install Hydroseeding | 40 | Acres | \$4,000.00 | \$160,000.00 | \$4,300.00 | \$172,000.00 | \$4,594.00 | \$183,760.00 |
| 76 | Furnish and Install Temporary 3" Air/Vacuum Release Valve | 5 | Each | \$1,500.00 | \$7,500.00 | \$6,200.00 | \$31,000.00 | \$7,921.00 | \$39,605.00 |
| 77 | Remove and Dispose of Damaged PVC Pipe | 1 | Lump Sum | \$10,000.00 | \$10,000.00 | \$7,100.00 | \$7,100.00 | \$5,820.00 | \$5,820.00 |
| Total Bid Schedule | | | | | \$7,121,000.00 | | \$7,987,611.00 | | \$10,191,808.00 |



Creative Materials Arriving this Month

- Banners and rack cards
- Will be displayed at all libraries as well as county and city offices

How many times a week should I water?

WATER
WATER WISELY

How long should I water?

Sprinklers
Lawn & trees

1. Water 15-20 minutes
2. Water 15-20 minutes for a healthy lawn

Drip Irrigation
Lawn & trees

1. Water 15-20 minutes
2. Water 15-20 minutes for a healthy lawn

Additional Tips:

- Water early in the morning or late in the afternoon
- Watering amount: 1/2" - 1" per week
- Apply water in about 10-15 minute intervals
- Water until the soil is moist to a depth of 1-2 inches
- Check irrigation system regularly and adjust water if necessary

For general info or a consultation for landscape maintenance, please contact our professional water conservation line.

7

Q&A
Thank you for your time.



waterconservation.org



info@waterconservation.org



8



Board Meeting
February 2022

1

ANTICIPATED COST OF FUTURE SYSTEM IMPROVEMENTS

| Future System Improvements | Projected Capital Expense (2016 dollars) |
|--|---|
| Ash Creek Project | \$41,705,000 |
| Cottam Wells | \$1,063,000 |
| Diamond Valley Well | \$1,349,000 |
| Pinto's Well | \$1,350,000 |
| Quail Creek WTP Expansion (60) | \$46,000,000 |
| Quail Creek Ozone Addition (proportionate) | \$1,432,000 |
| Sand Hollow Regional Pipeline | \$18,047,000 |
| Sand Hollow Wells | \$8,977,000 |
| Sand Hollow WTP | \$74,829,000 |
| Sand Hollow Arsenic WTP | \$6,798,000 |
| Sullivan Wells | \$2.7 million |
| Lake Powell Pipeline | \$1,377,609,000 |
| Water Rights | \$5,000,000 |

2

PROPORTIONATE SHARE OF EXISTING FACILITY COSTS

| Existing Facilities | Original Cost | Excess Share | Cost of Excess Capacity (2016 dollars) |
|------------------------------------|---------------|--------------|---|
| Cottam Wells | \$1,080,734 | 45.71% | \$1,408,336 |
| Kayenta Once Wells | \$582,099 | 46.00% | \$267,766 |
| Sand Hollow - Other Projects | \$6,749,972 | 40.43% | \$3,728,676 |
| Quail Creek WTP Expansion (60 MGD) | \$2,441,378 | 100.00% | \$2,441,378 |
| Total | | | \$8,659,885 |

3

IMPACT FEE

| | Cost per FRC |
|------------------------------|------------------|
| Cost of Supply Facilities | \$14,096 |
| Cost of Treatment Facilities | \$3,300 |
| Total Cost | \$ 17,396 |

4

Local Project List

- Anticipated cost more than \$82 million next year
- Various stages of development

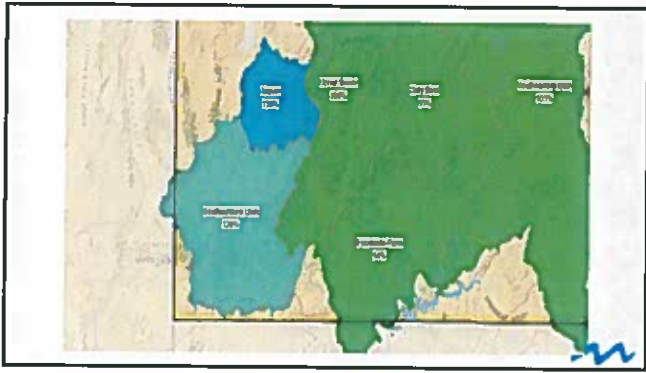


5

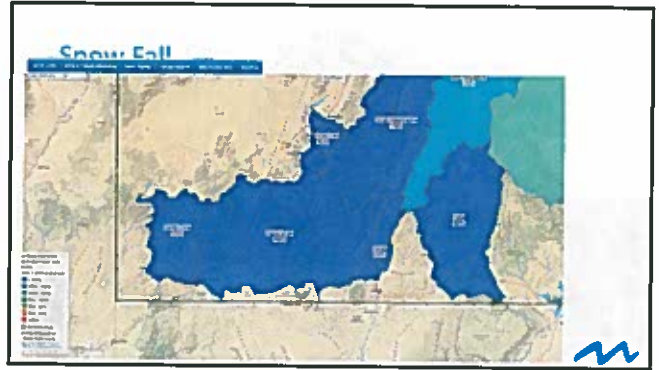
Funding

- Property Tax
- Impact Fees
- Water Rates
- State Funding
- Federal Funding

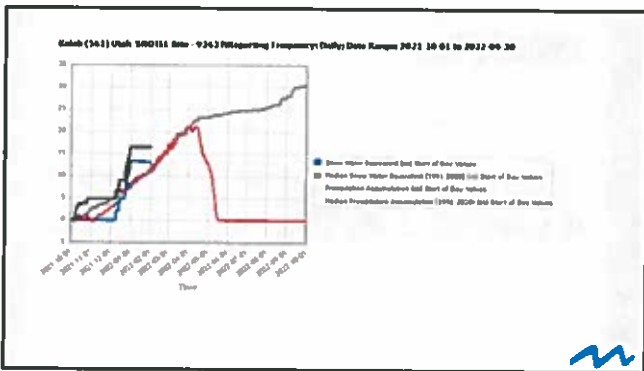
6



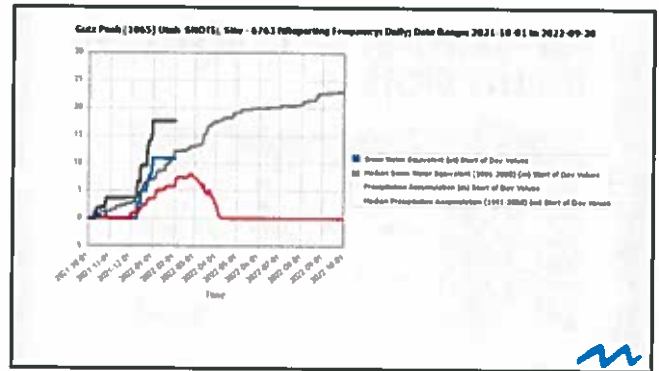
7



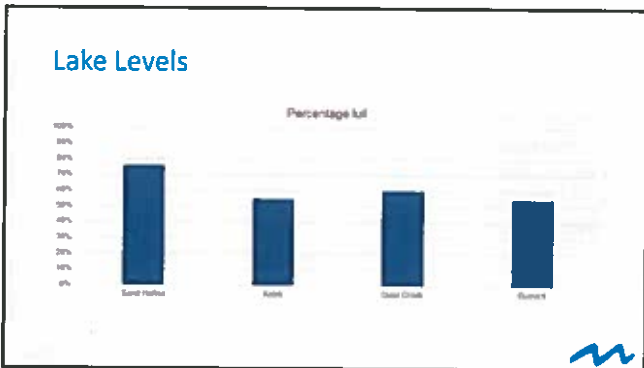
8



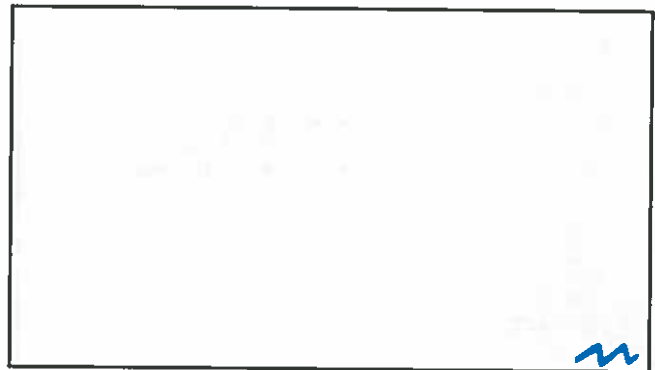
9



10



11



12

Creative Materials Arriving this Month

- Banners and rack cards
- Will be displayed at all libraries as well as county and city offices

How many times a week should I water?

WATER

How long should I water?

Sprinklers (15-20 min)

Drip Irrigation (30-45 min)

Handwatering (10-15 min)

7

Q&A
Thank you for your time.



wwcd.org



info@wwcd.org



8